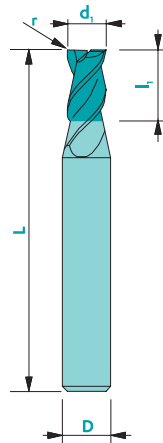
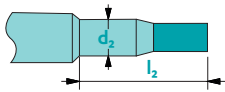


# 3020

# EXPERT end mill for stainless steel toric



Upon request



Material	Vc uncoated	Vc coated	Uncoated	Coated	Rec. Coating*
Steel < 700 N/mm <sup>2</sup>	-	-	-	-	-
Steel > 700 N/mm <sup>2</sup>	-	-	-	-	-
Stainless steel	50	70	□	■	Tisi (BQ)
Cast iron	-	-	-	-	-
Copper	-	-	-	-	-
Brass - Bronze	-	-	-	-	-
Aluminium	-	-	-	-	-
Gold - Silver	-	-	-	-	-
Platinum - Palladium	-	-	-	-	-
Superalloys	-	-	-	-	-
Titanium	-	-	-	-	-

not adapted - adapted □ highly adapted ■

Tolerances  $d_1 \leq 1 \text{ mm} \rightarrow 0/-0.01$   $D: h5$   
 $d_1 > 1 \text{ mm} \rightarrow 0/-0.02$   $\curvearrowright +0/-0.01$   
 $d_1 = D \rightarrow d_1: e8$

Available uncoated or coated (see page 308)



Z3-5

0.10-0.30



$\lambda$   
42°



$\gamma$   
14°

CARB



$ap=0.8x d_1$



$ae=0.04x d_1$   
 $ap=1x d_1$

Art. n°	$d_1$	$l_1$	D	L	r	Z		
							Uncoat.	Trio*
3020d1.00	1.0	1.5	6	57	0.10	3	▲	▲
3020d1.50	1.5	2.3	6	57	0.10	3	▲	▲
3020d2.00	2.0	3.0	6	57	0.15	3	▲	▲
3020d2.50	2.5	3.8	6	57	0.15	3	▲	▲
3020d2.80	2.8	4.2	6	57	0.15	3	▲	▲
3020d3.00	3.0	4.5	6	57	0.15	3	▲	▲
3020d3.50	3.5	5.3	6	57	0.20	3	▲	▲
3020d4.00	4.0	6.0	6	57	0.20	3	▲	▲
3020d4.50	4.5	7.0	6	57	0.20	3	▲	▲
3020d5.00	5.0	8.0	6	57	0.20	3	▲	▲
3020d6.00	6.0	9.0	8	63	0.20	3	▲	▲
3020d8.00	8.0	12.0	10	72	0.30	3	▲	▲
3020d10.00	10.0	15.0	10	72	0.30	4	▲	▲
3020d12.00	12.0	18.0	12	83	0.30	4	▲	▲
3020d16.00	16.0	24.0	16	92	0.30	5	▲	▲

\* Prices for other coatings: contact us!

To order a coated tool, add the 2-letter coating code to the article number